

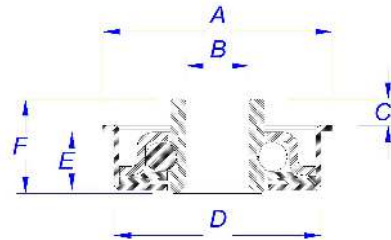


Roller heads

Cold forged galvanized and carbonitrided bearing, with steel balls in temperate heart, used for the construction of the rollers. Comes oiled, has the characteristic of being very smooth and cheap.

APPLICATIONS:

- GRAVITY AND TRACTION ROLLERS



CODE	DESCRIPTION	A	B	C	D	E	F
TR18F6	GALVANIZED ROLLER HEAD Ø 18 BORE 6	17,5	6,1	1,5	15,7	5,5	7,5
TR18F7	GALVANIZED ROLLER HEAD Ø 18 BORE 7	17,5	7,1	1,5	15,7	5,5	7,5
TR24F7	GALVANIZED ROLLER HEAD Ø 24 BORE 7	23,5	7,1	3	20,5	7	11
TR24F8	GALVANIZED ROLLER HEAD Ø 24 BORE 8	23,5	8,1	3	20,5	7	11
TR25F7	GALVANIZED ROLLER HEAD Ø 25 BORE 7	24,5	7,1	3	22,2	7	11
TR30F7	GALVANIZED ROLLER HEAD Ø 30 BORE 7	29,5	7,1	4	26,8	7	12,6
TR30F8	GALVANIZED ROLLER HEAD Ø 30 BORE 8	29,5	8,1	4	26,8	7	12,6
TR30F10	GALVANIZED ROLLER HEAD Ø 30 BORE 10	29,5	10,1	3,5	27,8	9	13,6
TR32F7	GALVANIZED ROLLER HEAD Ø 32 BORE 7	31,5	7,1	2,5	28,8	7,5	11
TR32F8	GALVANIZED ROLLER HEAD Ø 32 BORE 8	31,5	8,1	2,5	28,8	7,5	11
TR32F10	GALVANIZED ROLLER HEAD Ø 32 BORE 10	31,5	10,1	2	28,8	7,5	11
TR32FE11B	GALVANIZED ROLLER HEAD Ø32 HEXAGONAL BORE 11	31,5	ES11	2	28,8	7,5	11
TR32F12	GALVANIZED ROLLER HEAD Ø 32 BORE 12	31,5	12,1	2	28,8	7,5	11
TR40F7	GALVANIZED ROLLER HEAD Ø 40 BORE 7	39,5	7,1	4	37,2	10	15,4
TR40F8	GALVANIZED ROLLER HEAD Ø 40 BORE 8	39,5	8,1	4	37,2	10	15,4
TR48F7	GALVANIZED ROLLER HEAD Ø 48 BORE 7	47,5	7,1	3,5	44,5	10,8	15,4
TR48F8	GALVANIZED ROLLER HEAD Ø 48 BORE 8	47,5	8,1	3,5	44,5	10,8	15,4
TR48F10	GALVANIZED ROLLER HEAD Ø 48 BORE 10	47,5	10,1	3,5	44,5	10,8	15,8
TR48F12	GALVANIZED ROLLER HEAD Ø 48 BORE 12	47,5	12,1	3,5	44,5	10,8	15,8
TR50F7	GALVANIZED ROLLER HEAD Ø 50 BORE 7	49,5	7,1	4	47,2	10,3	15,4
TR50F8	GALVANIZED ROLLER HEAD Ø 50 BORE 8	49,5	8,1	4	47,2	10,3	15,4
TR50F10	GALVANIZED ROLLER HEAD Ø 50 BORE 10	49,5	10,1	4	47,2	10,3	15,8
TR50F12	GALVANIZED ROLLER HEAD Ø 50 BORE 12	49,5	12,1	4	47,2	10,3	15,8

CMM ITALY SRL

30030 Mellaredo di Pianiga (VE) Via Tagliamento, 10 - Tel. 041 5190344 - Fax 0415194646
Mail: info@cmmitaly.com - www.cmmitaly.com